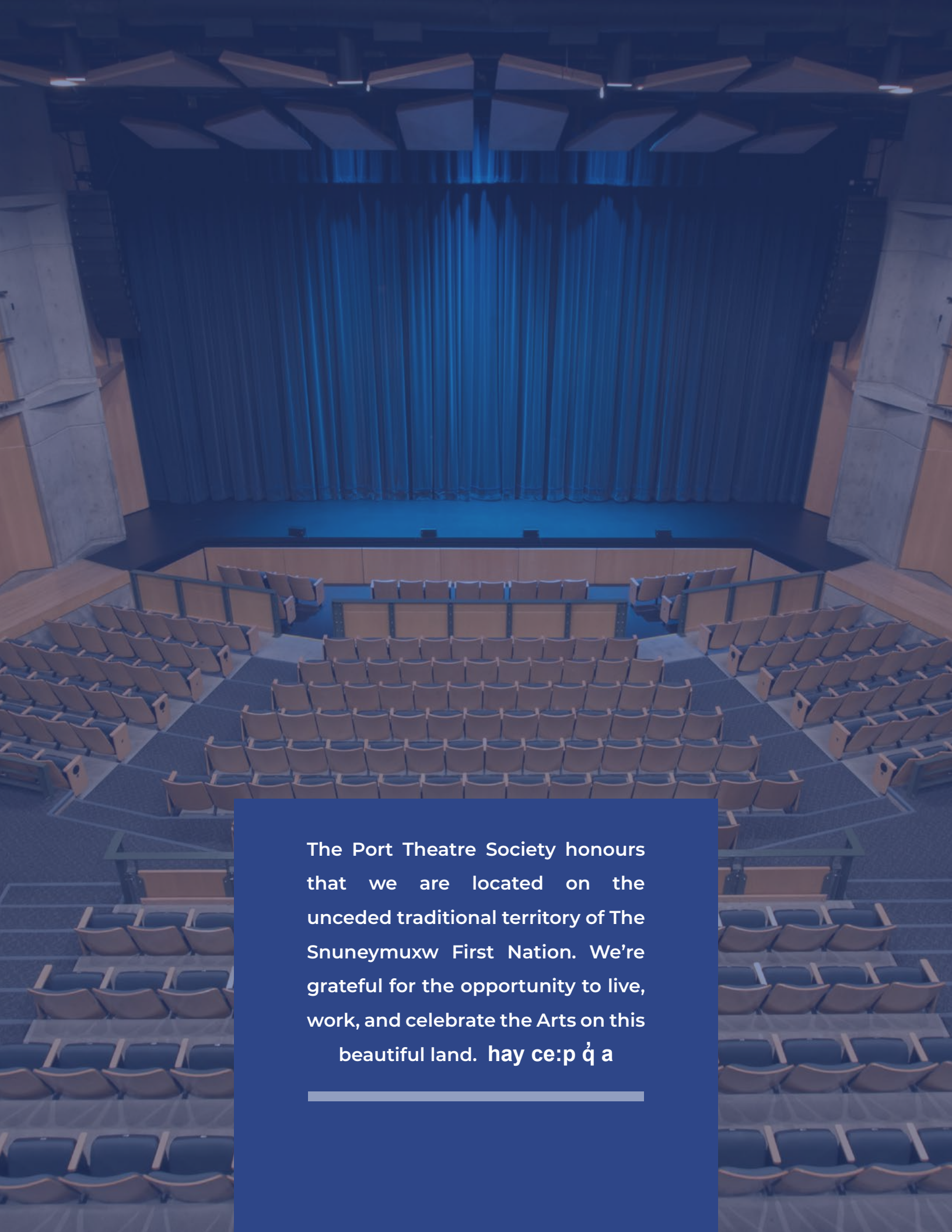


JAN  
JUN

2023

# Annual Report





The Port Theatre Society honours  
that we are located on the  
unceded traditional territory of The  
Snuneymuxw First Nation. We're  
grateful for the opportunity to live,  
work, and celebrate the Arts on this  
beautiful land. hay ce:p q̓ a

---



# Message From **The President**



If it seems like we just had our Annual General Meeting — you're right. We held our AGM in April and reported on a full year (January to December 2022). The Society has now changed its fiscal year end to better match our operations. This means that we have one short "year"

and are reporting on six months (January to June 2023). Moving forward, we'll continue to report on a 12-month period (July 2023 to June 2024) and host our AGM each fall.

There was plenty going on at the Port Theatre in the first months of 2023. There was a full Spotlight Series of six shows featuring a wide variety of unique and exciting performances, from the audience favourite International Guitar Night to

the first Canadian presentation of Modern Table's *Sok-Do*.

Two emerging artists from Vancouver Island were presented as part of the Discovery Series: the one-woman show *Shield Maiden*, and *Joshua & Frankie's DISTANCE - A New Musical*. It's a great thrill to present new, local artists on stage at the Port Theatre.

On behalf of the Board of Directors, I would like to thank the staff and volunteers who make the Port Theatre a special place to experience live performances. I would also like to thank our partners and sponsors who made these performances possible.

And finally, a big thank you to all our loyal members and patrons who continue to value the arts and support us in all we do.

I am excited about the new season, and I hope that you all will be too!

-Brian Clemens  
BOARD PRESIDENT  
The Port Theatre Society

## OUR MISSION STATEMENT

- To build and serve our community by bringing people together as a vital gathering place.
- To deliver exceptional performance experiences for artists and audiences.
- To act as a catalyst in the creation, collaboration, and development of transformative new works and talent.

## CORE VALUES

- We are compassionate, accessible, inclusive, and welcoming.
- We care deeply about our patrons, artists, donors, staff, and volunteers.
- We are a committed partner of the community in which we serve.
- We are a leader in arts and culture.

# Message from the Artistic Executive Director



Many organizations dread their end of year audit. Audits have a reputation for being time consuming, tedious, and typically unfold without the drama or excitement we often seek from the stories we put on stage. Well... we love them so much we decided we would do a second one a few months later!

Amid pandemic recovery, staffing shortages, cancelled performances, and inflation, we asked ourselves “what else can we take on?”

That came in the form of a budgetary assessment which made a compelling case that our fiscal year end was not optimally aligned with our organization’s activities. It cut our season in two. Much like the academic year, most of our activity occurs between September and June. Our summer is relatively quiet with many staff taking well-earned vacations. It is also when we diligently prepare for the upcoming season, make final decisions on programming, and unveil our lineup for our Port Presents Spotlight Series.

So, our fiscal year end has moved from December 31 to June 30. This strategic change also mandates that we hold an Annual General Meeting and present our audited financial statements for the most recently concluded year. This “annual” report is more like a 6-month report, as is also the case with our audit. We hope this short-term disruption will help us plan on a season-by-season basis and more closely match our activity cycle.

Audit aside, we have lots to celebrate and reflect upon. We welcomed *International Guitar Night* and *Red Sky*

*Performance* in January and February. We invited high schools to see Green Thumb Theatre’s performance of *For Now* which explored thought provoking themes around gender and privilege. We established a new partnership with the Korean Cultural Centre and the Korean Embassy to bring Modern Table who performed only at the National Arts Centre and then with us. Unfortunately, a storm on the east coast meant we had to cancel Nella. We were not sure if Dakh Daughters would make it given the conflict in Ukraine, but they arrived to deliver a powerful show. We closed the Spotlight Series with a sold-out performance of Peter Pan by Vancouver Island’s very own, Ballet Victoria.

Our Discovery Series, now officially into its post-pandemic second year, featured *Shield Maiden* (from Gabriola Island) and the world premiere of a new musical by Josh & Frankie. We are heartened to see growing support from our local community for these talented and emerging artists.

We remained committed to providing support to community groups struggling to bounce back after the pandemic. In total, we delivered support to approximately a dozen local groups to help them build back. Unfortunately, we also saw a few community groups unable to return, even with this additional support, highlighting the need and vulnerability of live events and shows in our city. We were able to deliver this additional support thanks to our generous donors and the last remnants of pandemic relief funding.

We are grateful for the journey we have embarked upon, and we look forward to a future filled with renewed enthusiasm, engaging performances, and an unwavering commitment to our community. We have an incredible team at the Port Theatre who weathered the storm together so that the spotlight continues to shine brightly on our theatre.

- David Warburton  
ARTISTIC EXECUTIVE DIRECTOR  
The Port Theatre Society

*"The Port Theatre is my happy place. I can be feeling very blue and I walk through that door and the sun shines bright. Love the volunteers and the office staff. Techs and management are top notch."*

- Bessie Harvey, Volunteer 2006 – present







*"The Discovery Series was a game changer for me professionally. David and his entire staff provided a breathtaking scope of support for my performance that elevated what I had to offer. This support included a lighting designer that made me feel like Beyoncé, responsive and highly engaged in-house tech support, and a successful media push both locally and provincially. The Port Theatre hired an ASL interpreter to make the show accessible for the Deaf community and 12 folks from that community came out to the show. For Vancouver Island, that number is remarkable.*

*The most crucial support however has been post series. The benefit to myself as well as to any other Discovery artist is the wealth of networking, knowledge, and generosity of the Port Theatre team. That one show in March has created opportunities for me to connect with other BC presenters, book a 24/25 season tour in BC, potentially Ontario and most wondrously, Europe."*

- Melanie Teichroeb, Shield Maiden

# The Discovery Series

The Discovery Series is The Port Theatre Society's presentation series that features emerging artists from our Vancouver Island community. We're supporting and growing local talent in our region. Our primary intention is to open doors for artists from diverse backgrounds.

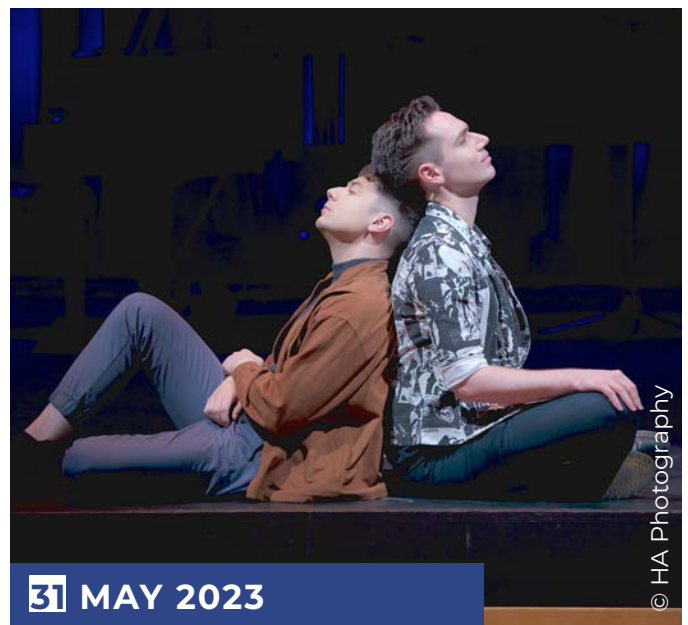
Each performer in the Discovery Series has had a chance to experience a fully professional team. And, just as importantly, the artists experienced what it takes to develop a relationship with an audience in our 800-seat theatre.



## SHIELD MAIDEN

One-Woman Show

An original Gabriola Island theatre production, Melanie Teichroeb staged her one-woman show *Shield Maiden* at the off-Broadway Theatre Row complex in New York's theatre district. The production, a medieval-style TED Talk on what it means to be a Viking warrior, is now part of The Port Theatre's Discovery Series.



## JOSHUA & FRANKIE'S DISTANCE - A New Musical

They took a leap of faith because they believed — in the era of separation — that falling in love was still possible. From the moment they discovered each other's music on opposite ends of the globe, to the night they met over video-chat, to the day they saw each other in person for the first time — they followed their hearts every step of the way.

**THANK YOU TO OUR DISCOVERY SERIES  
SPONSORS JANUARY 2023 – JUNE 2023**

- RBC Emerging Artists
- HA Photography

# The Spotlight Series

The Spotlight Series is The Port Theatre Society's nationally acclaimed presentation series that includes some of the most exciting touring artists available, every one of them showcasing artistic excellence and innovation. At the heart of the Spotlight Series is a passion to create access to diverse and authentic experiences for our audiences. With a variety of unique, bold, exciting events, there's truly something for everyone!



**International Guitar Night** JANUARY 27, 2023

**Miigis - Red Sky Performance** FEBRUARY 7, 2023

**Modern Table - Sok-Do** FEBRUARY 22, 2023

**For Now** MARCH 30, 2023

**Dakh Daughters** APRIL 26, 2023

**Peter Pan** MAY 10, 2023





THANK YOU TO OUR SPOTLIGHT SERIES SPONSORS  
JANUARY 2023 – JUNE 2023

- Church Pickard, Chartered Professional Accountants
- Korean Cultural Centre Canada
- Nanaimo Association for Community Living (NACL)
- Nanaimo Child Development Centre (NCDC)



**7** FEBRUARY 2023 Miigis - Red Sky Performance

# SPOTLIGHT Sponsors



# DISCOVERY Sponsors



# FUNDERS & Supporters



Supported by the Province of British Columbia





# Theatre Angels Program

The Port Theatre Society provides free tickets to social service agencies in the Mid-Island area, who in turn distribute the tickets to clients who might not otherwise have the opportunity to attend live performances. The Port Theatre Society is able to increase access to the performing arts and help dissolve social, physical, and financial barriers throughout our communities through the generous support of our donors.



## 950 TICKETS WERE MADE AVAILABLE TO THE FOLLOWING AGENCIES & GROUPS:

Better At Home Program -  
Nanaimo Family Life  
Big Brothers Big Sisters of Central  
Vancouver Island  
Boys And Girls Clubs Of Central  
Vancouver Island  
C.M.H.A. Mid Island Branch  
Cedar School & Community  
Enhancement Society  
Cedar Seniors Drop-In  
Central Vancouver Island  
Multicultural Society  
Clay Tree Society  
Clements Centre Society  
Dallens Dream Team Society  
Eden Gardens  
Forward House Community  
Society  
Haven Society  
Hepatitis C Society  
Heron's Nest Respite Guest House  
Island Crisis Care Society  
Island Deaf + Hard of Hearing  
Centre  
J.Garnons Williams Ltd.

John Howard Society  
Kiwanis Village  
Kw'Umut Lelum  
Literacy Circle  
N.A.H.S. Butertubs Place Seniors  
Complex  
N.Y.S.A. - One Stop Youth Center  
Nanaimo 7-10 Club  
Nanaimo Aboriginal Centre  
Nanaimo Affordable Housing  
Society  
Nanaimo Association for  
Community Living  
Nanaimo Brain Injury Society  
Nanaimo Child Development  
Center  
Nanaimo Citizen Advocacy Assoc.  
Nanaimo Community Hospice  
Society  
Nanaimo Disability Resource  
Centre  
Nanaimo Family Life Association  
Nanaimo Harbour City Seniors  
Nanaimo Organization for the  
Vision Impaired (NOVI)

NARSF Programs Ltd.  
Open Minds Open Windows  
Society  
Pacifica Seniors Lodge  
Pamelas Home Society  
Parent Support Services of BC  
People for a Healthy Community  
on Gabriola Society  
Port Alberni Association for  
Community Living  
Skaana Community Resources  
Ltd.  
Snuneymuxw First Nations  
Supporting Advocates in  
Leadership  
Take a Hike Foundation  
Tillicum Lelum Aboriginal  
Friendship Centre  
Vancouver Island Mental Health  
Society  
Vancouver Island University -  
Clemente Course  
VIHA Mental Health-Youth and  
Family Addiction  
Youth 20/20 Can Project

# Partners

## COMMUNITY PARTNERS

Around Town Tellers  
Crimson Coast Dance Society  
Federation of BC Writers  
Nanaimo Art Gallery  
Soul Sisters Apothecary

## MEDIA PARTNERS

CHLY 101.7 FM  
102.3 The Wave  
Island Parent Magazine  
NAHS Magazine  
Nanaimo Magazine  
Nanaimo News Bulletin  
Seniors Resource Directory  
Take 5 Magazine

## HOTEL PARTNER

Coast Bastion Hotel

# Community In-Kind Sponsorship Program

The Port Theatre Society made the decision to provide financial support to the following groups through a series of community in-kind sponsorships as our own contribution to their reopening efforts:

- Crimson Coast Dance Society
- Malaspina Choir Society
- Mid-Island Performing Arts Festival Society
- Nanaimo Fiddle Society
- Nanaimo International Jazz Festival
- Nanaimo Sings
- Piano Heist
- Soundwave Choir Concert
- Theatre One
- Vancouver Island Leadership Conference 2023
- Vancouver Island Symphony





# Health & Safety

The first half of 2023 was a period of relative stillness for the Occupational Health, Safety & Wellness Committee. Our Communicable Disease Prevention Plan remained constantly under review, but largely unchanged, and we lifted the mask mandate for staff and volunteers in March of 2023. We took the available time to audit and update some of the organization’s key health and safety functions, including improving our security protocols during ticketed events, and updating our OHSW Manual. The OHSW Committee remains dedicated to maintaining a safe and healthy environment for patrons, staff, and volunteers.

## Facility Report 2023 (January – June)

### HEALTH & SAFETY COMMITTEE

- Greg Graham**  
FRONT OF HOUSE MANAGER
- Bessie Harvey**  
VOLUNTEER
- Andrea Noble**  
MARKETING & COMMUNITY OUTREACH COORDINATOR
- Karen Orchyk**  
VOLUNTEER
- Wilson Pascoe**  
ASSISTANT TECHNICAL DIRECTOR
- Kathy Robinson**  
TICKET CENTRE MANAGER
- Mya Wilson**  
BOOKING COORDINATOR
- Angela Wu**  
ACCOUNTING CLERK

#### HVAC UPGRADE

- The original chiller installed in 1998 was replaced with a Variable Refrigerant Flow system.
- Reduces the total amount of greenhouse gases burned by relying on electricity instead of natural gas.
- The new system both heats and cools, with original boilers retained as backup.
- More efficient – many small units that can be individually controlled versus one large unit that cycled on and off.
- This project was initiated by the City of Nanaimo as part of the greater initiative to reduce carbon emissions from all City facilities.

#### MICROSOFT OFFICE 365/TEAMS ADOPTION

- The legacy file server shuttered, and all files were re-located to the cloud.
- Adoption of Microsoft Teams by staff provides the ability to collaborate on documents and has improved communication for projects.
- This also offers Increased file security, and the ability to work offsite if needed.

#### NEW LIGHTING CONSOLE

- A planned replacement, this is the third console since opening in 1998 and has the capability to control modern intelligent fixtures with greater ease of operation.



*"Not all immigrants who come to Canada have had the privilege of accessing elegant art in their home country. The Theatre Angels Program opens the door for them to widen their eyes. It is difficult to express how much it means to some of our immigrants who may be a low income family, suffer from trauma, experience depression or various immigrant challenges. The opportunity allows them to receive and appreciate the performance, escape their reality for a brief moment, and better integrate into the local community. I can verify that many of our immigrants benefited through this program for many years."*

- Ming Frederick, Settlement Team Leader,  
Central Vancouver Island Multicultural Society



# Thank you to our Donors

JANUARY 1 - JUNE 30, 2023

## \$1,000 – \$4,999 LEVEL

Anonymous

## \$500 – \$999 LEVEL

Margot C. Holmes

David Duncan McLauchlin

## \$100 – \$499 LEVEL

Anonymous Donors - 4

Donna & Hal Baldwin

Lynne & Richard Bowen

Mary Carr

Laurie Crossan

Maggie de Vries

East2west2110 Investments Inc.

Dave Francis

Jim & Tove Gahr

Judith Gibson

John R. Gorosh

Gillian Guy

Beverley Hamm

Frank Hansen

Barbara Harling

Bessie Harvey

Egon Holzwarth

Diana Johnstone

H.M. Johnston

Zdzislaw Kedzior

Shirley Kosich

Lynne Lepin

Bill & Denyse McCullough

A. & G. McRae

Violet E. Molnar

Linda Moore & John Fox

Michael Nish

Joan Nolting

Susan & Nigel Pountney

Betty Prosser

Michele Rawcliffe

Betty Reynolds

Heather Lynne Sanrud

Ann Smith

Wendy Smitka

Frances Vargo

Ursula Verstraete

David Warburton

Mike and Carol Whately

Dr. John & Christine Whitelaw

## \$10 – \$99 LEVEL

Anonymous Donors - 15

Bertha Abma

Rhonda Bailey

David Bideshi

Linda Booler

George Bowley

Bob and Lorna Calderwood

Marianne Cardiff

Wolfgang Carolsfeld

Jennifer Lee Fleming

Norah Forrest

Debbie Goodridge

Doreen Hagen

Brenda & Ken Hammer

Hirst Family

R. E. Hudson

Shirley Jones-Koers

Jan Kennedy

Vi (Violet) Kilback

LaFauci Family

John & Barb Merriman

Carol Milo

Kyle Mulligan

Lorraine Price

Joshua & May Purney

Don & Peggy Radford

Joan Y. Robertson

Margaret Saam

Soloway Law

Chris & Toula Spencer-Johnson

James & Joan Vanstone

Michele & Rick Weighill

Dr. Graham White

Bob & Sophie Wong

Patricia & Herschel T. Young

**THANK YOU** TO OUR DONORS WHO GENEROUSLY  
GAVE LAST SEASON FROM JULY 2022 - DECEMBER 2022.  
THESE ARE LISTED IN THE PORT THEATRE SOCIETY'S  
2022 ANNUAL REPORT.

*Thank you to  
those who gave  
a little EXTRA!*

**Patrons rounded  
up their ticket  
purchases January 1  
to June 30 2023  
totalling**

**\$3396.<sup>50</sup>**



**SPOTLIGHT SERIES: Modern Table's Sok-Do**

# Introducing Our New Development Officer



Elizabeth Baxter  
DEVELOPMENT OFFICER  
The Port Theatre Society

Elizabeth joined us from Ontario at the end of May in the new role of Development Officer. Elizabeth's background is in music and the arts, having completed a Bachelor of Music on the cello before completing her Master of Arts in Arts Leadership, both at Queen's University in Kingston, Ontario. She has worked at arts organizations such as the Isabel Bader Centre for the Performing Arts in Kingston, and the Canadian Opera Company and Tafelmusik in Toronto.

Elizabeth is honoured to have the opportunity to experience the people of Nanaimo, the geography of Vancouver Island, and the culture of the Coast Salish people who have occupied this land since time immemorial. She is excited to be able to advocate for the importance of a lively arts and culture scene in this city and uphold the standards that the community has come to know and expect from The Port Theatre Society.

## Staff Announcements

We welcomed the following staff:

**Judi Carter**

- Assistant Front of House Manager

**Jade Fleury**

- Ticket Clerk

**Robyn Marsh**

- Assistant Front of House Manager

**Grace Plumley**

- Bartender

**Angela Wu**

- Accounting Clerk

We said farewell to **Elisa Gurdian**,  
Accounting Clerk

### THE PORT THEATRE SOCIETY GRATEFULLY ACKNOWLEDGES THE FINANCIAL SUPPORT OF:

BC Arts Council

BC Touring Council

City of Nanaimo

Government of Canada -  
Department of Canadian  
Heritage

The District Municipality of  
Lantzville

Regional District of Nanaimo  
Electoral Areas A, B, C, E



# Ticket Sales

JANUARY 1 - JUNE 30, 2023

## PORT THEATRE EVENTS

Total sales for events:  
\$1,300,612.<sup>50</sup>

Total number of tickets sold:  
33,395

Total comps:  
2,988

## LIVESTREAMING

Total sales for livestream events:  
\$390.<sup>00</sup>

Total number of tickets sold:  
20

Total comps:  
544

## OFFSITE EVENTS

Total sales for offsite events:  
\$92,951.<sup>50</sup>

Total tickets sold for offsite events:  
2,392

Total comps:  
292

Number of offsite events:  
13

Number of performances:  
19

### OFFSITE VENUES:

Beban Park Social Centre | The Coast Bastion Inn  
The Queen's | Knox United Church, Parksville  
St. Andrew's United Church

## Theatre Activity

Jan-Jun  
2023

### TOTAL

Events  
**122**  
Patrons  
**50,706**

### JANUARY

Events  
**14**

Patrons  
**4,480**

### FEBRUARY

Events  
**18**

Patrons  
**6,061**

### MARCH

Events  
**20**

Patrons  
**7,557**

### APRIL

Events  
**21**

Patrons  
**6,770**

### MAY

Events  
**24**

Patrons  
**11,184**

### JUNE

Events  
**25**

Patrons  
**14,654**



*"Our magnificent performing arts centre has enriched the social and emotional growth of so many of our children and indeed adults over the past 25 years. Nanaimo's Port Theatre has truly enhanced the quality of life of all our citizens, and will for decades to come with dedicated patrons, volunteers and a professional management team ensuring its success."*

*- Diana Johnstone,  
Board of Directors  
1989 – 1999 & 2015 – 2023*

# Port Theatre Members

JANUARY 1 - JUNE 30, 2023

Annual Membership with The Port Theatre Society provides discounts and pre-sale privileges on a great selection of events, plus a host of other benefits and savings! A yearly membership demonstrates support and appreciation of The Port Theatre Society's mandate to stimulate and enhance artistic, cultural and economic activity of central Vancouver Island.

Total Members:  
**1584**

Total Membership  
Revenue JAN-JUN 2023  
**\$20,377.00**

## INDIVIDUAL MEMBERSHIP

\$30 YEARLY BENEFIT INCLUDES:

- Ticket discounts on all Spotlight Series events
- Pre-sale privileges (advance notice and advance buys)
- Email notice when a new event goes on sale
- Voting privileges at our Annual General Meeting

## BUSINESS MEMBERSHIP

\$100 YEARLY BENEFIT INCLUDES:

- Rack card space in the Ticket Centre
- Business listed in our Annual Report
- Business listed on our Thank You web page
- Staff members receive discounts on all Spotlight Series events

# Business Members

JANUARY 1 - JUNE 30, 2023

Allegra Marketing-Print-Mail  
Carlos O'Bryan's Neighbourhood Pub  
Casino Nanaimo  
Dr. Jennifer McKenzie  
Dr. R.G. Robinson Inc.  
Electrical Enterprises VI Ltd.  
Gina's Mexican Cafe  
Harbour Dance Studios  
Heath Law LLP  
Island Fisherman Magazine  
Island West Coast Developments  
Kwumut Lelum

Main Street Communications  
Nanaimo Hospitality Association  
Pacific Biological Station Staff Association  
Pawsitive Touch Canine Massage  
Progressive Diesel  
Soloway Law  
Spice of Life Catering  
Tempo Dance Academy  
Topographics Landscape Architecture  
Troller's Fish and Chips/Off the Hook  
Yellowpoint Drywall Limited



# Board of Directors

**Liana Appelt**  
VICE PRESIDENT

**Brian Clemens**  
PRESIDENT

**Michael Guan**  
DIRECTOR AT LARGE

**David Mailloux**  
DIRECTOR AT LARGE

**Jennifer Millbank**  
DIRECTOR AT LARGE

**Nic Przada**  
TREASURER

**Cindy Shantz**  
DIRECTOR AT LARGE

**Deb Trueman**  
DIRECTOR AT LARGE

**Travis Sippel**  
DIRECTOR AT LARGE

**Thank you  
to the team  
at the City of  
Nanaimo Parks,  
Recreation &  
Culture.**



## THE PORT THEATRE IS PROUD TO BE A MEMBER OF:

Arts BC  
BC Alliance for Arts + Culture  
BC's Guide to Arts & Culture  
BC Touring Council  
Canadian Dance Assembly  
CAPACOA  
(Canadian Arts Presenting Association)  
CINARS  
CITT  
(Canadian Institute for Theatre Technology)  
Gabriola Chamber of Commerce  
Greater Nanaimo Chamber of Commerce  
Volunteer Nanaimo

# Meet our Team

## ARTISTIC EXECUTIVE DIRECTOR

David Warburton

## ADMINISTRATION

DEVELOPMENT OFFICER

Elizabeth Baxter

ADMINISTRATIVE COORDINATOR

Lisa Desprez

MARKETING & COMMUNITY  
OUTREACH COORDINATOR

Andrea Noble

BOOKING COORDINATOR

Mya Wilson

## TICKET CENTRE

TICKET CENTRE MANAGER

Kathy Robinson

SENIOR TICKET CLERKS

Niomi Pearson

Jo-Ann Tait

TICKET CLERKS

Sara Fee

Jade Fleury

Anna Stecca

Sandra Wilson

## FINANCE

FINANCE OFFICER

Sarah Parker

ACCOUNTING CLERK

Angela Wu

## FRONT OF HOUSE

FRONT OF HOUSE MANAGER

Greg Graham

FRONT OF HOUSE ASSISTANT  
MANAGERS

Judi Carter

Raeanne Madge

Robyn Marsh

BARTENDERS

Dawn Bugar

Jacqui Conway

Olivia Mah

Janet Marren

Maria Noel

Grace Plumley

Joanne Swain

Henryka Szado

Robyn Thompson

Kyra Van Shaik

## PRODUCTION

TECHNICAL DIRECTOR

Michael Hessler

ASSISTANT TECHNICAL DIRECTOR

Wilson Pascoe

HEAD STAGE CARPENTER

Bruce McComb

HEAD OF AUDIO

Lukas Smith

HEAD OF LIGHTING

Jason Pouliot

TECHNICIANS

Stephen Adamson

Brad McAuley

Ken Swain

Liam Worthington

Sue York

## SERVICES

Allegra Marketing-Print-Mail

Aman Building

Maintenance

Farm Fresh Design

Footprints Security

Jenneson Creatives



# Volunteers

In January of 2023, the Port Theatre welcomed a new set of recruits to our roster of 110 volunteers to help us prepare for our busy 2023/24 Season. Working side by side with our volunteer mentors, these new volunteers are excited to be working in the Arts and look forward to assisting our patrons enjoy a full theatrical experience. Some of these volunteers have been on a waitlist for a number of years and are now ready to step into their role as ambassadors of the Port Theatre.

In the Front of House Department, Rae Madge went from full-time to part-time. In the spring, the Port Theatre hired Assistant House Managers Judi Carter and Robyn Marsh in part-time positions to round out the team. All three have been pivotal in managing our volunteers as Senior House Manager Greg Graham continues to work in Administration advancing all the shows and receptions, while working daytime events.

The Port Theatre would like to acknowledge the exceptional volunteers on our Newsletter Committee. All are original newsletter members have their own column to provide helpful information and encourage our current volunteers. Thank you to the Committee for keeping us informed and up to date!

## 2023 PORT THEATRE VOLUNTEER SERVICE AWARD: **CAROL BELL**

- Carol is one of the original Port Theatre volunteers.
- She started volunteering August 12, 1998
- Carol has over 2,100 volunteer hours

*In 1998, I responded to a "call for volunteers" by the Port Theatre and have been volunteering ever since. The Port has become my second home. It is where I feel most comfortable. I have and continue to meet so many wonderful people — other volunteers, staff, and patrons. I am so very grateful to be part of this wonderful organization.*

*Prior volunteer experiences are being a companion/friend with a physically disabled teenaged girl, organizing a community outreach day program for retired active seniors living in the community and, this past summer, volunteering at the Parksville Outdoor Theatre. I enjoy hiking, walking my dog, swimming, kayaking, and spending time with my friends.*

## Acknowledgement of Merit

### 5,250 HOURS

Bessie Harvey

### 3,250 HOURS

Karen Orchyk

### 2,000 HOURS

Carol Bell

### 1,750 HOURS

Lee O'Brien

### 1,500 HOURS

Barb Dunphy  
Marjorey Hope  
Eileen Miller

### 1,000 HOURS

Lawrence Atkinson  
Brenda Henderson

### 250 HOURS

Vicki Gates  
Debbie Goodridge  
Susan Moretto  
Jim Olsen  
Leslie Olsen

### 150 HOURS

Betty Anne Fulton

### NEWSLETTER COMMITTEE

Betty Reynolds, Val Duthie, Carolyn Walker,  
Rae Madge, Greg Graham

Total volunteer hours  
January 2023 – June 2023

**6,093**

Total volunteer hours  
since 1998 opening:

**3,021,826**



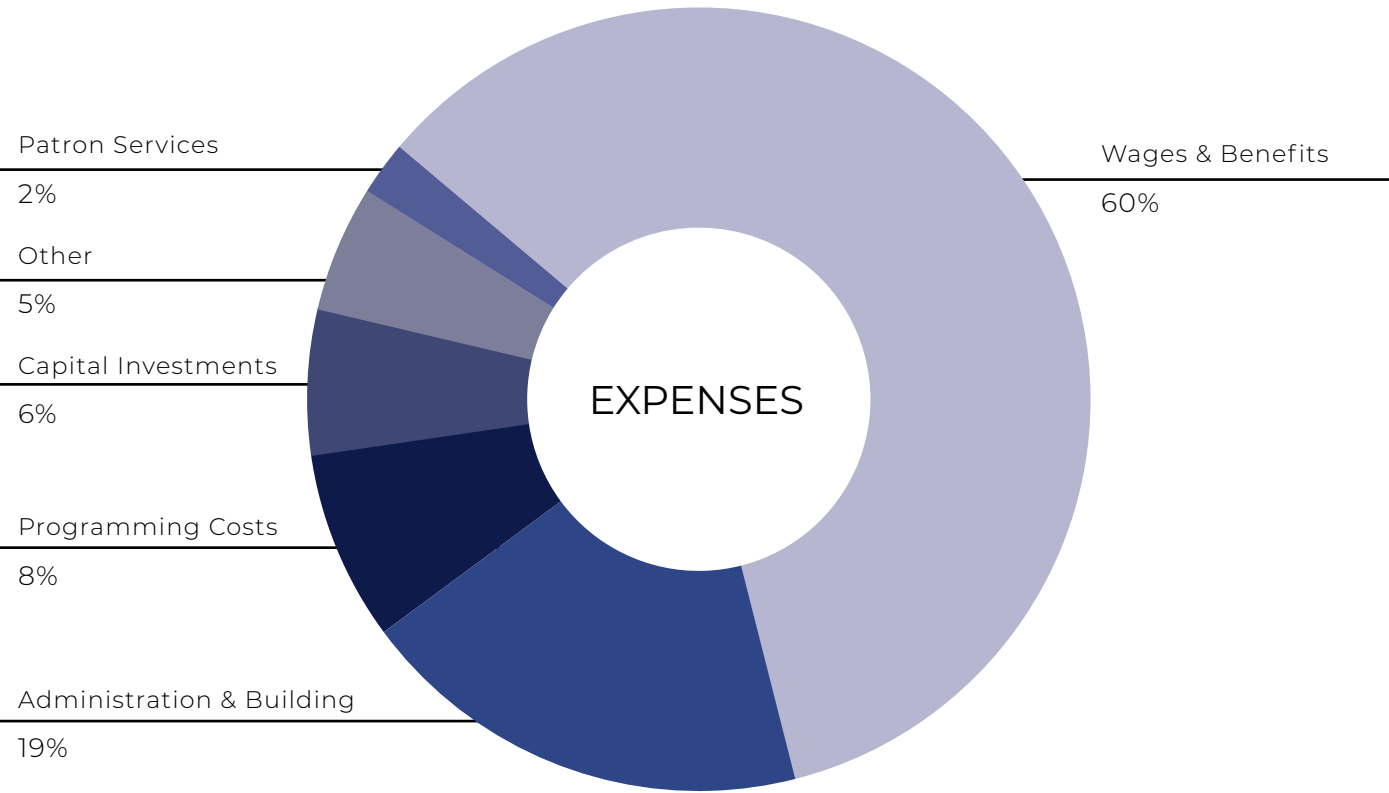
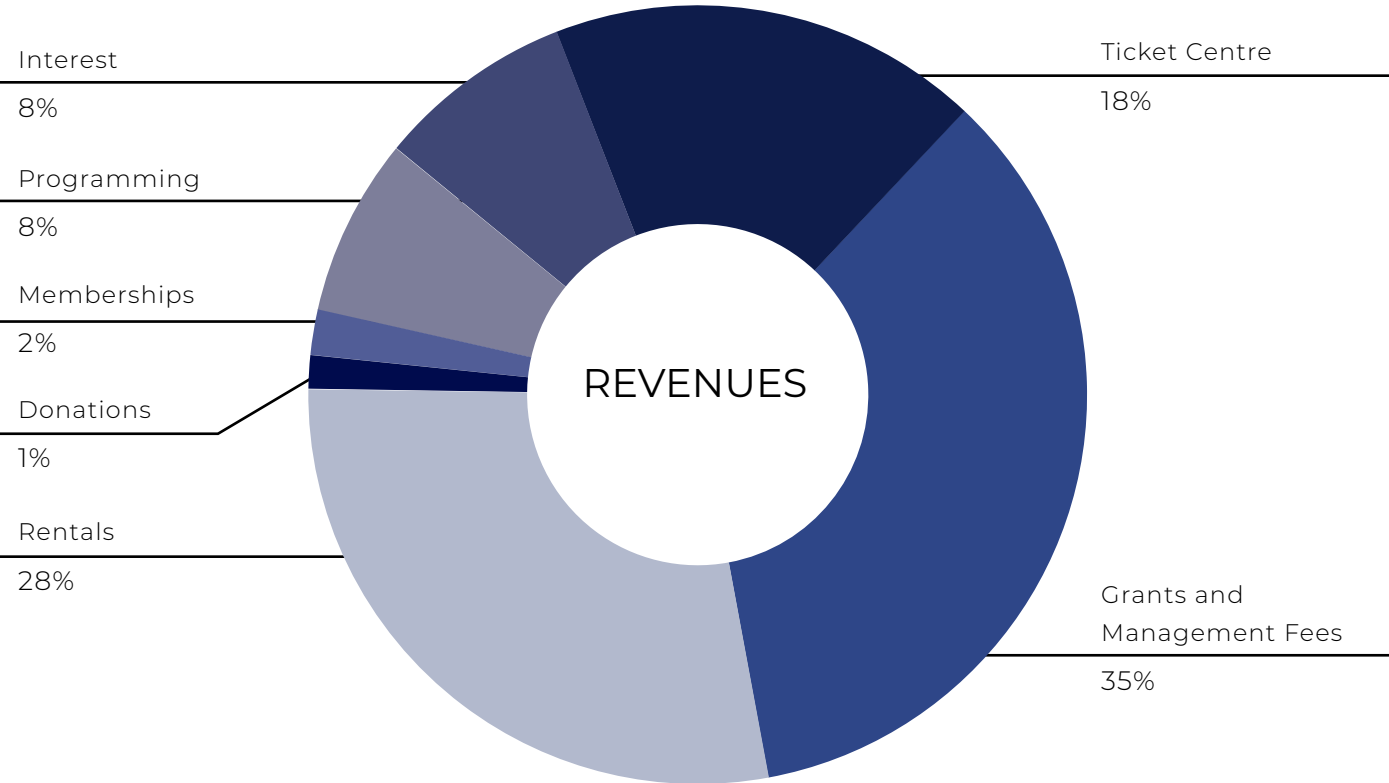


*"The Port Theatre opened in 1998 on Nanaimo's harbour front, and since then, has become a beloved cultural landmark. The theatre brings us together to celebrate diversity and new perspectives, inviting us to immerse ourselves in the joy of storytelling through drama, music, song and dance. We thank The Port Theatre for their role as cultural stewards, and we celebrate their indispensable contributions to the cultural vibrancy of our community."*

- Mayor Leonard Krog, City of Nanaimo



# Revenues & Expenses



# Financial Information

THE PORT THEATRE SOCIETY

For the period ending June 30, 2023

With comparative figures for the year ending December 31, 2023

## REVENUES AND EXPENSES

### REVENUES

	2023 (PERIOD END JUN 30)	2022 (YEAR END DEC 31)
Grants and Management Fees	\$ 423,734	\$ 868,034
Rentals	345,067	545,383
Ticket Centre	217,431	387,174
Programming	90,684	209,996
Interest	96,655	117,064
Donations and Sponsorship	17,614	77,528
Memberships	20,377	42,229
	<b>1,211,562</b>	<b>2,247,408</b>

### EXPENSES

Wages and Benefits	\$ 716,785	\$ 1,298,502
Administration and Building	226,295	377,837
Programming Costs	101,081	259,167
Capital Investments	70,000	130,138
Patron Services	28,575	42,979
Other	59,909	50,835
	<b>1,202,645</b>	<b>2,159,458</b>

<b>Excess of revenues over expenses</b>	<b>\$ 8,917</b>	<b>\$ 87,950</b>
---	-----------------	------------------

## FUND BALANCES

End of Period	2023	2022
Studio Theatre	\$ 483,331	\$ 483,331
Contingency Reserve	311,786	311,786
Capital Development	418,612	389,419
Theatre Angels	11,159	11,134
Operating Fund	471,879	492,180
	<b>\$ 1,696,767</b>	<b>\$ 1,687,850</b>









Welcome to the **HEART** of downtown Nanaimo  
**The Port Theatre** - Hub of Arts & Culture

125 Front Street,  
Nanaimo, BC,  
V9R 6Z4

Administration: 250-754-4555  
Ticket Centre: 250-754-8550  
[porttheatre.com](http://porttheatre.com)